

**COUNCILLORS' BULLETIN
WEDNESDAY, 6 DECEMBER
2017**



South
Cambridgeshire
District Council

CONTENTS

1. Meetings and events from Thursday 7 December to Friday 22 December 2017

Date	Time	Name	Venue	Contact
Thu 7 Dec	6pm	Civic Affairs Committee	Council Chamber	Patrick Adams
Fri 8 Dec				
Mon 11 Dec	9:30am	Planning Portfolio Holder's Meeting	Monkfield Room	Ian Senior
Tue 12 Dec				
Wed 13 Dec				
Thu 14 Dec				
Fri 15 Dec				
Mon 18 Dec				
Tue 19 Dec	6pm	Finance & Staffing Portfolio Holder's Meeting	Swansley Room A	Ian Senior
Wed 20 Dec				
Thu 21 Dec				
Fri 22 Dec				

INFORMATION FOR DISTRICT COUNCILLORS AND PARISH COUNCILS

2. This Week's A14 Cambridge to Huntingdon Closures

Below are details of this week's planned closures, as part of the A14 Cambridge to Huntingdon improvement scheme.

This week's A14 Cambridge to Huntingdon closures:

Mon 4 for one night

A14 eastbound between St Ives (J26) & Girton (J31), including A1307 inbound towards Cambridge (9pm - 6am)

A14 eastbound Histon (J32) exit slip (9pm - 6am)

A1 northbound Brampton Hut entry slip (9pm - 6am)

Thurs 7 to Fri 8

A1 northbound Brampton Hut entry slip (each night, 9pm - 6am)

Full closure A1198 Ermine St (each night, 9pm - 6am)

A14 eastbound Histon (J32) exit slip (each night, 9pm - 6am)

Fri 8 to Mon 11

Full closure Conington Rd (Fri 8pm - Mon 5am)

Full closure Dry Drayton Rd (Fri 8pm - Mon 5am)

Sat 12 to Mon 11

Full closure Potton Rd (Sat 5am – Mon 5am)

The official diversion route will be signposted and the diversion maps for the A1 closures are attached. Variable message signs in place that will advise drivers of the upcoming closures are

in place.

There are regular updates and details of closures specific to the A14 Cambridge to Huntingdon improvement scheme on [Facebook](https://www.facebook.com/a14c2h) (www.facebook.com/a14c2h) and [Twitter](https://twitter.com/A14C2H) (@A14C2H) pages. You can also find the latest posts by searching #A14C2Hclosures.

For questions about the A14C2H closures or scheme, just email A14CambridgeHuntingdon@highwaysengland.co.uk. For updates or information about closures not related to the scheme email info@highwaysengland.co.uk or call 0300 123 5000.

Please note - closures may be subject to change, so check out the social media pages daily for updates.

To contact your sections Stakeholder Manager, please use the email addresses below or the A14 helpline.

Section 1 & 2: Alconbury to the East Coast Main Line

Jon Lewell - jon.lewell@thea14.com

Section 3: East Coast Main Line to Swavesey

Jade Pettit - jade.pettit@thea14.com

Section 4 & 5: Swavesey to Milton

Bob Pettipher - bob.pettipher@thea14.com

A14 helpline **0800 270 0114** - This will be answered by a team member during site hours 8am - 5pm and messages can be left at other times.

3. A14 Monthly Bulletin - December 2017

Please find attached the A14 Monthly Bulletin for December.

4. How to do Business with South Cambridgeshire District Council

South Cambridgeshire District Council is inviting local small and medium sized businesses to learn about they can do business with the council at a supplier event on the 4 January 2018.

Companies will have the opportunity to learn about how they can find out about forthcoming council contracts, they will be given information and advice on the procurement process from officers and hints and tips from a local business on how to successfully tender for a council contract. Council officers involved in purchasing will also be available to talk to businesses following the meeting.

South Cambridgeshire District Council spends of approximately £16 million each year on the supplies and services it needs to deliver services to residents and businesses in the district. This provides businesses of all sizes and from all sectors with a wide range of potential commercial opportunities.

The event will be from 9:30 to 12:30 at: South Cambridgeshire District Council, South Cambridgeshire Hall, Cambourne Business Park, Cambourne, CB23 6EA

Please could you circulate information on the event to any businesses that you think might be interested in attending. Places are limited so if a business wishes to book a place, they should contact Sean Missin Procurement Officer by email sean.missin@scambs.gov.uk

GENERAL INFORMATION

5. Media Monitoring



Arising from the results of the Member Communication Needs Survey, many members highlighted the fact that residents found out about SCDC matters through the media.

The Council's Communications Team will produce a weekly summary of recent news items to be published in the Bulletin to help keep members informed of recent coverage of SCDC.

Contact the [Communications Team](#) for further information.

Date	Publication	Details		
29/11/2017	Heart Radio Bulletins	Start of work on ice rink mentioned in bulls	N/A	
29/11/2017	Cambridge News	Ice One! Milestone moment for ice rink project	P1 + P7	
29/11/2017	Cambridge News	Car found abandoned in ditch close to River Cam	P4	
29/11/2017	Star Radio Online	Grant awarded to help community group become local developer	Link	
29/11/2017	Cambridge Independent online	No slippery start as work begins on Cambridge ice rink	Link	
30/11/2017	BBC Radio Cambridgeshire	Cllr Lynda Harford interviewed about Cottenham CLT	Scrol l to 35 mins in	
29/11/2017	Cambridge Independent	No slippery start as work begins on Cambridge ice rink	P5	
29/11/2017	Cambridge Independent	World-leading agri-tech park could deliver 4,000 new jobs	P6	
29/11/2017	Cambridge Independent	Plans to curb airport engine noise	P15	
29/11/2017	Cambridge Independent	City cutting number of empty homes	P23	
29/11/2017	Cambridge Independent	Letter: 'Consultation over busway is omnishambles'	P30	Letter criticising GCP Cambourne to Cambridge busway consultation
29/11/2017	Cambridge Independent	Letter from Cllr J Williams: 'Extra bin services but it's still a mess'	P30	
30/11/2017	BBC News Online	A light dusting of blue bags forecast	Link	
30/11/2017	BBC Radio Cambridgeshire	Cllr Simon Edwards interviewed about SCDC revenue-raising, specifically Ermine Street Housing	Scrol l to 1h 5m in	
30/11/2017	Cambridge Independent	Vehicle sheds thousands of blue plastic bags on A428 at Cambourne	Link	
30/11/2017	Cambridge News online	Lorry dumps 'thousands' of blue plastic bags across A428	Link	
04/12/2017	Star Radio Online	One week until simpler recycling kicks in	Link	
05/12/2017	Cambridge	The shocking pile of rubbish left by the	Link	

	News online	road for weeks		
05/12/2017	Star Radio Online	Joint bid to boost local housing	Link	

6. Items of Interest from the Local Government Association (LGA)



Items of Interest from the Local Government Association (LGA)

The Local Government Association provides a list of news headlines relevant to its members. Please click the headlines below for more details.

Sunday 3 December 2017: *Observer*: [Blair backs "land value tax" to tackle housing crisis](#)
Former Prime Minister Tony Blair has backed a range of proposals aimed to tackle the shortage of affordable homes, in a new paper commissioned for this Institute for Global Change.

Monday 4 December 2017: *Guardian*: [Council told to invest pensions abroad](#)
A council has been told to invest its pension funds abroad, rather than in the UK, because of the political turbulence the country has faced in recent years.

7. View Planning Applications



To view the list of planning applications that have recently been submitted to the Council, please visit the authority's on-line [Planning Application Search](#). Once the page has loaded, you can use the [Search option](#) to set your own criteria of parish, area and date range.



The system will provide a range of information on current and decided applications since 1948, including a brief description of the development, reference number, decision and the date of decision. More recent applications show the name and telephone number of the council officer who is dealing with the application.

Search results are presented in a collection of pages, the number of which depends on the number of results your search produces. There are navigation tools to allow you to browse your results.

DECISIONS MADE BY OFFICERS AND REPORTED FOR INFORMATION

Please click on the link below to find details of decisions made by officers under delegated authority:

<https://www.scambsgov.uk/content/access-information>

OTHER INFORMATION

8. Newly-Published Items on modern.gov



Agendas

- [Civic Affairs Committee 7 December](#)
- [Planning Portfolio Holder's 11 December](#)

Decisions

- [Greater Cambridge Partnership Board 22 November](#)

Minutes

- [Planning Committee 1 November](#)

Plans

- [Forward Plan of Key Decisions](#)

Issues

- [Business Case for the creation of an Energy Load Fund](#)
- [Energy Investment Opportunities](#)
- [Corporate Plan Priorities](#)

9. SCDC Starters and Leavers



New Employees at the Council

Name: Melanie Braybrooke
Job title: Digital Support Officer
Date started: 7 December 2017

Name: Antonio Ferreira
Job title: Refuse Loader
Date started: 4 December 2017



Staff who have moved jobs

Name: Jordan Evans
Old Job title: Housing Apprentice
New Job title: Admin Assistant
Date moved: 1 December 2017



Staff who have left

Name: Laura Kitchen
Job title: Business Improvement Officer
Date leaving: 21 January 2018

Name: Dennis Ockenden
Job title: Project Surveyor
Date leaving: 5 December 2017

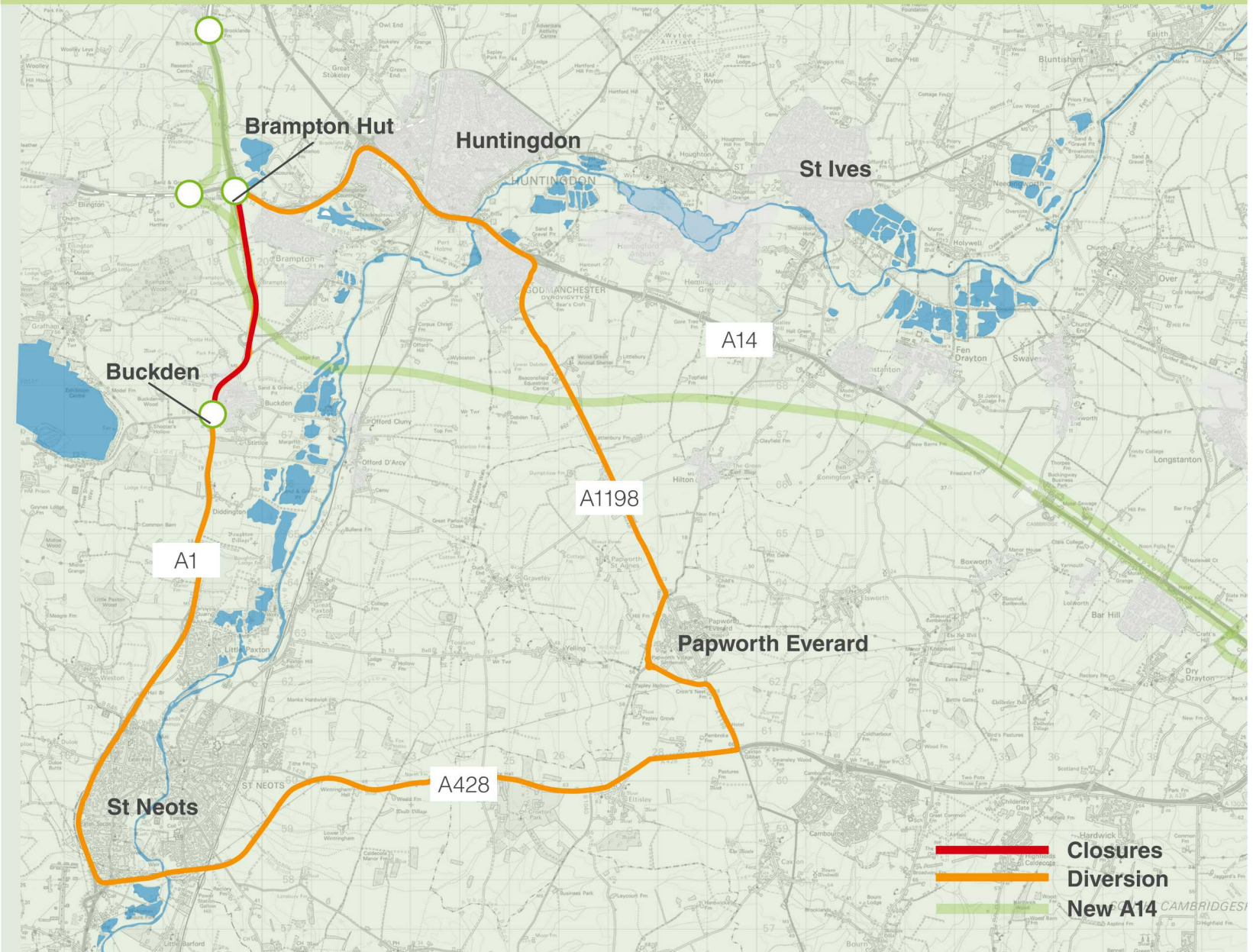
This page is left blank intentionally.

Agenda Item 2



A14 Cambridge to Huntingdon improvement scheme

Diversion for A1 closures between Buckden to Brampton Hut



The scheme will:

- combat congestion, making the A14 more reliable and providing capacity for future growth
- unlock economic growth, both regionally and nationally
- improve local connectivity
- improve safety for road-users and the community
- leave a positive legacy in Cambridgeshire

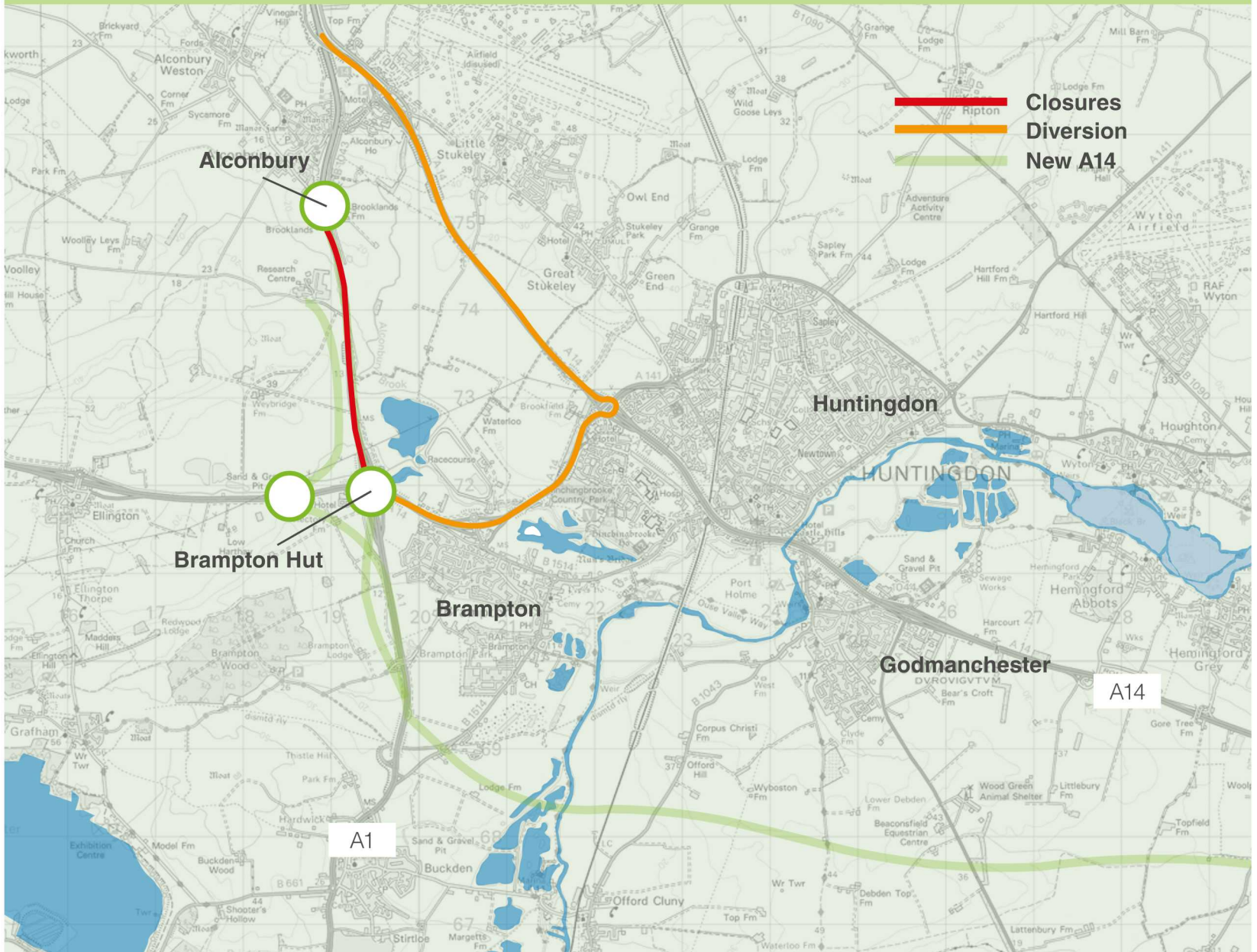
Stay in touch:

- @ A14CambridgeHuntingdon@highwaysengland.co.uk
- ☎ 0800 270 0114
- www www.highways.gov.uk/A14C2H
- f www.facebook.com/A14C2H/
- 🐦 Twitter - @A14C2H

This page is left blank intentionally.

A14 Cambridge to Huntingdon improvement scheme

Diversion for A14 closures between Brampton and Alconbury



The scheme will:

- combat congestion, making the A14 more reliable and providing capacity for future growth
- unlock economic growth, both regionally and nationally
- improve local connectivity
- improve safety for road-users and the community
- leave a positive legacy in Cambridgeshire

Stay in touch:

- @ A14CambridgeHuntingdon@highwaysengland.co.uk
- ☎ 0800 270 0114
- www www.highways.gov.uk/A14C2H
- f www.facebook.com/A14C2H/
- 🐦 Twitter - @A14C2H

This page is left blank intentionally.

A14 Cambridge to Huntingdon improvement scheme

Diversion for A14 closures between St Ives and Girton



The scheme will:

- combat congestion, making the A14 more reliable and providing capacity for future growth
- unlock economic growth, both regionally and nationally
- improve local connectivity
- improve safety for road-users and the community
- leave a positive legacy in Cambridgeshire

Stay in touch:

- @ A14CambridgeHuntingdon@highwaysengland.co.uk
- 0800 270 0114
- www.highways.gov.uk/A14C2H
- www.facebook.com/A14C2H/
- Twitter - @A14C2H

This page is left blank intentionally.

Winter has officially started, but thanks to long periods of dry conditions, our earthworks season extended well into November. Bridge structures are rising steadily along the whole route of the scheme and traffic will soon be able to travel on a brand-new section of the A1 at Brampton. The latest 'flythrough' can be viewed on YouTube; just click on this link [A14 Fly-through](#)

Sections 1 & 2 - Alconbury to the East Coast Main Line
Section 3 - East Coast Main Line to Swavesey
Sections 4 & 5 - Swavesey to Milton

Traffic Management

Sections 1 & 2: Night time closures will continue on the A1 north of Alconbury during vegetation clearance for the next few weeks. Narrow lanes and a 40mph speed limit is in force on the A1. The northbound off slip road at Brampton Hut will be closed from 21:00 hrs on Friday 17 November and will re-open at 06:00 hrs on Monday 20 November.

Section 3: There will be closures on Conington Road on the 2 & 3 December and 9 & 10 December.

Sections 4 & 5: Narrow lanes and speed restrictions continue on the A14 between Swavesey and the Girton interchange. Speed is limited to 40 mph in this area and speed cameras monitor compliance.

An extension to the traffic management 40 mph section of the eastbound A14 carriageway towards the Girton interchange is underway.

Lane closures are in place on the eastbound A428 at the Madingley turn-off and on the northbound A1307 between Girton Road and the A14.

Construction Activities

Steel Beams for several structures continue to arrive on site from the factory in Darlington these will arrive at both the viaduct that will take the A14 traffic over the A1 and at the Ouse Crossing, gradually heading towards and join the bridge over the north coast railway line. Vegetation clearance continues on the A1 north of Alconbury during night time closures.

On the east side of the existing A1, the Cock Brook culvert extension is now complete and sits ready waiting to be part of the new southbound carriageway.

The traffic switch at Brampton has taken place allowing work to begin on widening the northbound approaches to the junction and the A1 over the existing A14. This includes northbound traffic being taken off the old A1 road and onto the all new carriageway, pictured below, marking another chapter in the life of the Great North Road.

A14 Cambridge to Huntingdon Improvement Scheme December 2017



Section 3: We have recently lifted our first beam onto the bridge that will take the A14 over the East Coast Mainline. The first lift, which took place on Saturday 18 November was very successful. Further beam lifts will be carried out at around 1am on Sunday morning for the next two weekends. A 500t crawler crane remains on site to complete the works during weekend possessions.



Other structures across this part of the scheme are at varying stages of development, as detailed last month.

Sections 4 & 5:

The temporary Bailey bridge situated near to the Swavesey Junction was successfully removed on the evening of Saturday 25 November.

The Trinity Foot pub, which was sadly derelict has now been demolished to make way for the new Swavesey junction. This operation took place over 5 days, and the area has now been cleared prior to commencement of construction of the junction, next spring.

You can contact us on our dedicated A14 Public Helpline 0800 270 0114
Scheme information is also available at our website www.highways.gov.uk/A14C2H
and you can also follow us at.

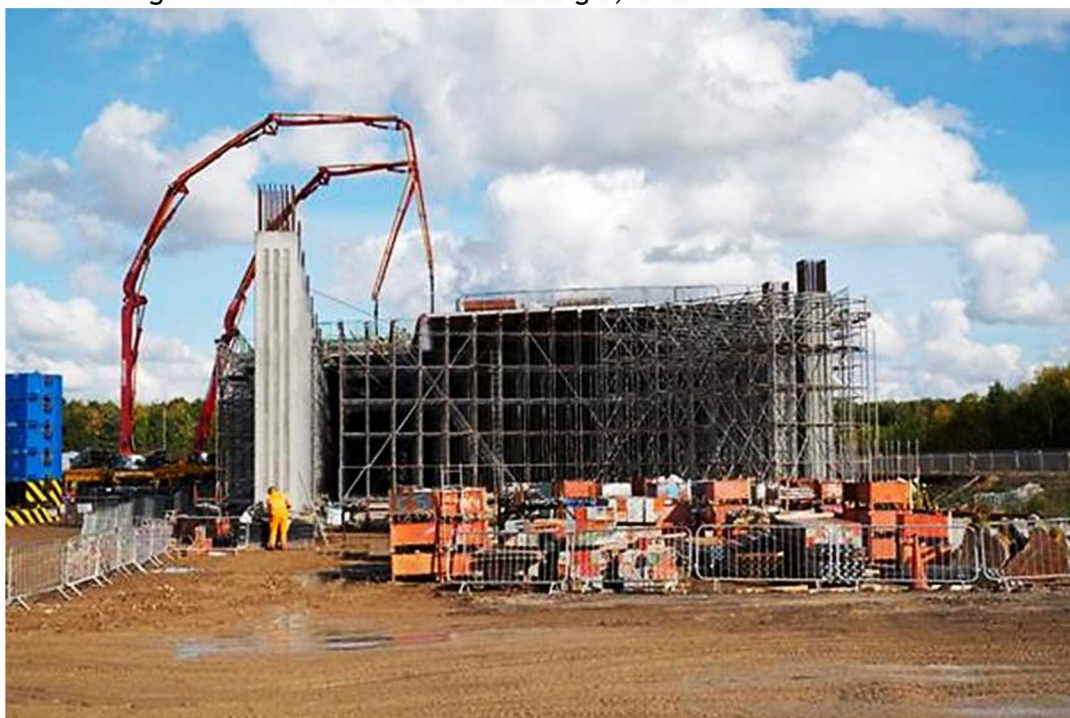
A14 Cambridge to Huntingdon Improvement Scheme December 2017

The new bridge, which carries the new A14 to M11 link road over the realigned eastbound carriageway of the existing A428 carriageway, has been completed as per our original programme.

The approach embankments are supported by reinforced soil walls and wing walls to the back of the column lines.

Key facts about the bridge

- 92m long and 25m wide structure
- It has 36 columns which are 2m square with height varying between 6m to 9m
- The bridge deck is 1.35m thick containing 3,500m³ of concrete



Work has started to build the structures for the new Swavesey junction.

At Bar Hill, we are constructing a temporary slip road to the west of the existing interchange. When this comes into use, traffic exiting or joining the east bound carriageway of the A14 will be switched onto the new alignment. The first switch is planned for spring 2018. This will enable us to start work on 4 new bridges and construction of a new roundabout over the A14. We'll also construct a large new pond within the junction into which rain water from Bar Hill will flow.

The bailey bridge that was recently removed from across the carriageway at Swavesey will be taken to a storage location where it will be lengthen. It will be reinstalled over the A14 close to the Girton interchange in Spring 2018. Look out for the supporting banks which are already taking shape on either side of the road.

You can contact us on our dedicated A14 Public Helpline 0800 270 0114
Scheme information is also available at our website www.highways.gov.uk/A14C2H
and you can also follow us at.

A14 Cambridge to Huntingdon Improvement Scheme December 2017

Archaeology

Our 200+ archaeologists are still working hard to uncover all the known archaeological items of interest across the project.

Once areas have been cleared of items of interest (finds) we can begin the construction process.

We hope to share information on the items found with you in the next few months.

The archaeology work in some areas will continue well into 2018.

Community Engagement

In section three, we received a request from Fenstanton Hilton Primary School for help with fencing to improve safety in the school car park. We were delighted to be able to help and delivered over 40 m of crowd control fencing to the school, for which they were extremely grateful.

Further community works will include a visit to Godmanchester Rovers to help improve their car parks.



Farewell to the Trinity Foot